

BEFORE COPY
TO JOIN THE
ORG



[MEMBERSHIP](#)
[POLICY](#)
[EDUCATION](#)
[CREDENTIALING](#)
[PUBLICATIONS](#)
[ANNUAL MEETING](#)
[ABOUT US](#)
[NEWS](#)
[RESOURCES](#)
[JOIN TODAY](#)

Membership

Join thousands of members who are committed to providing optimal patient care.

Be part of the only professional pain management association that embraces an integrative model of care. Membership gives you access to resources, education you can't find anywhere else, and a network of like-minded clinicians.



[Become a Member of the Academy](#)

Why the Academy

Lucy Whyte-Ferguson, DC, discusses her relationship with the American Academy of Pain Management.

Tiered Membership Program

As the premier pain management organization for all clinicians who care for people with pain, the Academy offers a tiered membership program designed to make membership more affordable for many of our current members, attract valuable new members, and build our integrative "team." In addition, we will be offering free membership for students and residents.

General Membership by Income Level

0 - \$75,000	\$75,001 - \$124,999	\$125,000 - \$184,999	\$185,000+
\$95 US	\$195 US	\$275 US	\$355 US
\$155 INTL	\$245 INTL	\$325 INTL	\$405 INTL

Benefits of Membership

- Access to credentialing (Advanced Diplomate, Diplomate, Fellow, Clinical Associate)
- Reduced registration rates for the Academy's Annual Clinical Meeting
- A listing in the Academy's searchable clinician database
- Policy action alerts
- Access to networking opportunities with thousands of other like-minded clinicians
- The Pain Practitioner quarterly magazine and Currents newsletter

[Register Online for an Academy Membership](#)

- or -

[Fill out an order form](#) or contact us today at (209) 533-9744.

JOIN COPY
AFTER

Leaders in Multidisciplinary Care Since 1988

[Home](#) | [About](#) | [Membership](#) | [Pain Summit 2018](#) | [Education](#) | [Policy/Advocacy](#) | [Resources](#)

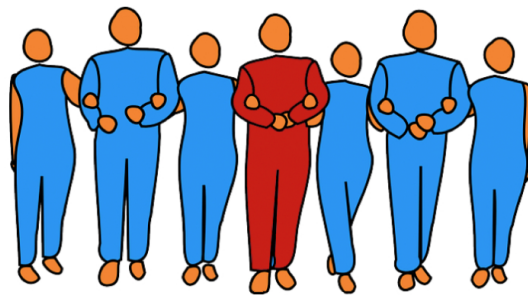
Membership

More in this Section...

[Share](#) | [f](#) | [t](#) | [p](#) | [m](#)

Thousands of Multi-disciplinary Practitioners are Fighting Chronic Pain by Advancing an Integrative Model as the Standard of Care.

We are #TeamPainCare. Join us!



We welcome, equally, *all members of the pain care team*, including MDs/DOs, nurse practitioners, pharmacists, psychologists, physician assistants, PTs, OTs, acupuncturists, chiropractors, dentists, massage therapists, and others.

Being a member in the [Academy of Integrative Pain Management](#) shows your patients and colleagues that you stand for:

- Treating each person with pain using an individualized plan.
- The power of a team-based approach.
- Access to all appropriate treatment options.

[Learn about our mission here.](#)

What You Receive as a Member:

A card and certificate you can display in your practice to show your affiliation with AIPM and that you stand for a patient-centered, team-based approach to pain care.

Access to more than 100 free and discounted CME courses in our online [Pain Care Learning Center](#) so that you can stay on top of the latest IPM approaches.

NEW! Member-only discounts including 50% off at [MedPro Disposal](#), [FlashCode](#), [The Legal Side of Pain](#), and more. [See all discounts here.](#) (AIPM Members - Please sign in to our [Member Portal](#) for instructions on how to access these exclusive discounts)

NEW! Instant access to connect with other Integrative Pain Management (IPM) practitioners in your area to share knowledge, swap lessons learned and make referrals to each other.

Complimentary subscriptions to our award-winning magazine, [The Pain Practitioner](#), and our bi-monthly e-newsletter, [Currents](#).

NEW! FREE Pain Profile Outcome (POP) Kit to print and use in your practice.

Discounts on all events, from our Annual Meetings to online-only webinars.

10% off the [Advanced Pain Management Practitioner \(APMP\) Certificate Program](#) (a \$150 value!).

A listing in our [Find a Provider](#) online member directory so that new patients can find you.

NEW! Full concierge service: You can call or email us at anytime for help with any member benefits, policy/advocacy advice, continuing education assistance, credentialing questions, or other needs you have for your IPM practice.

Updates on CME requirements in your state, along with courses you can take online to fulfill those requirements.

NEW! A free subscription to [AIPM in Action](#), packed with updates about we're doing, where we stand, and any other pertinent news including our Executive Director's speaking engagements, relevant articles about AIPM, members who have made an impact, and policy/advocacy advances.

Representation on pain policy and advocacy issues on federal and state levels.

NEW! Invitations to participate in AIPM online events Twitter Chats and Facebook Lives as experts.

The chance to be featured in our e-newsletters and magazine.

Plus, a brand new way to connect and learn from other IPM practitioners around the world! Coming soon in 2018.

Sign In

☒ Remember Me[Forgot your password?](#)[Haven't registered yet?](#)



Academy of Integrative
Pain Management

2018 MEMBERSHIP DUES

	1 YEAR	Save 20% 2 YEARS	Save 25% 3 YEARS
INDIVIDUAL MEMBERSHIP			
General	\$500	\$480	\$675
Student/Resident	\$50	N/A	N/A
GROUP MEMBERSHIP			
5 or More	\$250/pp	\$450/pp	\$625/pp

* NOTE: If you are a credentialed member, dues are \$350/year as of 2018.
[See more information about credentialed memberships here.](#)

[Learn more about our discounted group rates here.](#)

We've been around for 30 years – and our work is needed *now* more than ever. Show your support for an integrative model of care for people with pain!

[Become a member of #TeamPainCare today!](#)

[Download our Membership Brochure](#)

[Download our Student/Resident Brochure](#)

Already a member? [Login to the Member Portal here.](#)

Contact Us

8700 Monrovia Street, Suite 310
Lenexa, KS 66215
209 533-9744
info@integrativepain.org



Who We Are

[About the Academy](#)
[Meet the Team](#)
[Board of Directors](#)
[Advertise with Us](#)

What We Do

[We Advocate](#)
[We Educate](#)
[We Inform](#)

Take Action

[Become a Member](#)
[Find a Provider](#)
[Access the Learning Center](#)
[Subscribe Free](#)